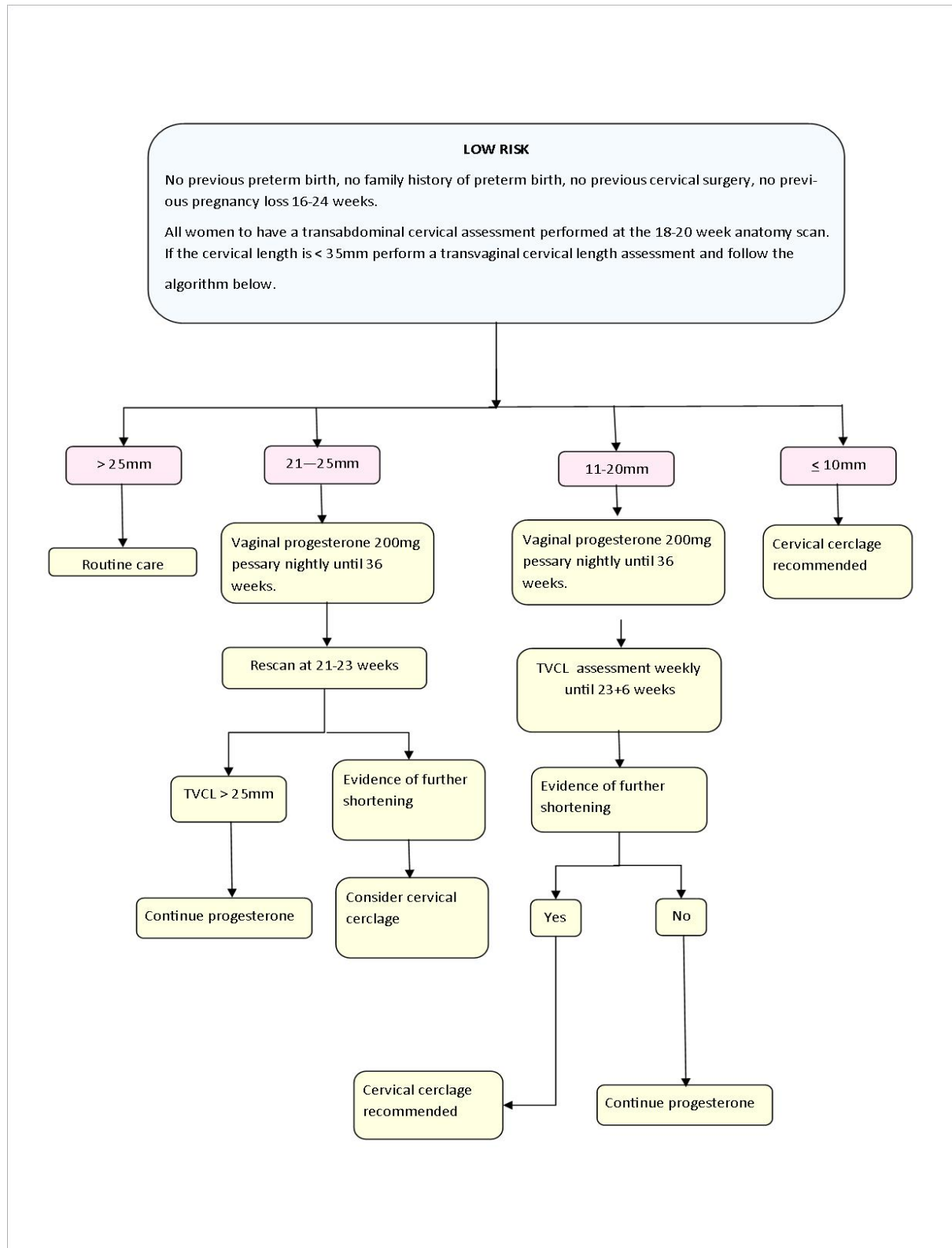




PRETERM BIRTH PREVENTION

**PRETERM BIRTH PREVENTION : LOW RISK
WOMEN**

PRETERM BIRTH PREVENTION- LOW RISK WOMEN : MANAGEMENT OF
This guideline applies to current singleton pregnancies only





REFERENCES / STANDARDS

National Standards – 1- Care Provided by the Clinical Workforce is Guided by Current Best Practice
Legislation - Nil

Related Guidelines / Policies – Preterm Birth Prevention : Moderate Risk Women
Preterm Birth Prevention : High Risk Women

Other related documents –

RESPONSIBILITY

Policy Sponsor	Medical Director Obstetrics
Initial Endorsement	May 2015
Last Reviewed	
Last Amended	
Review date	May 2018

**Do not keep printed versions of guidelines as currency of information cannot be guaranteed.
Access the current version from the WNHS website.**

© Department of Health Western Australia 2015

Copyright [disclaimer](http://www.kemh.health.wa.gov.au/general/disclaimer.htm) available at: <http://www.kemh.health.wa.gov.au/general/disclaimer.htm>